

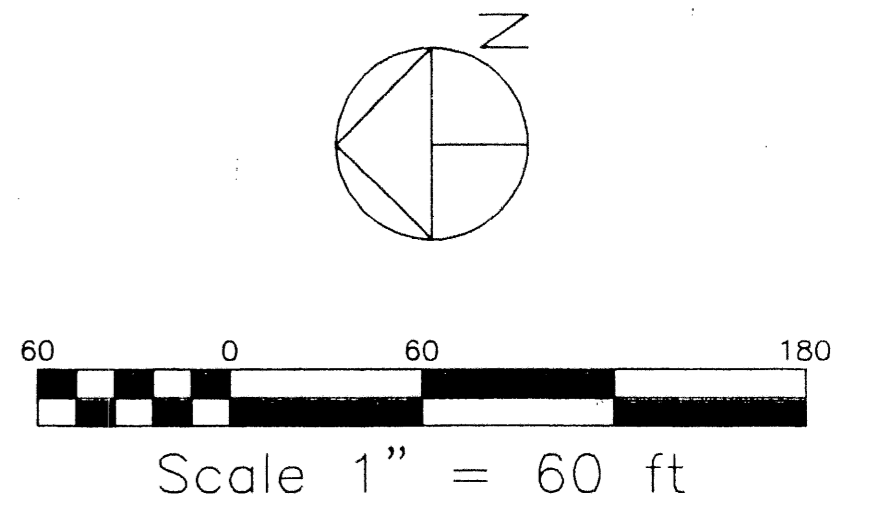
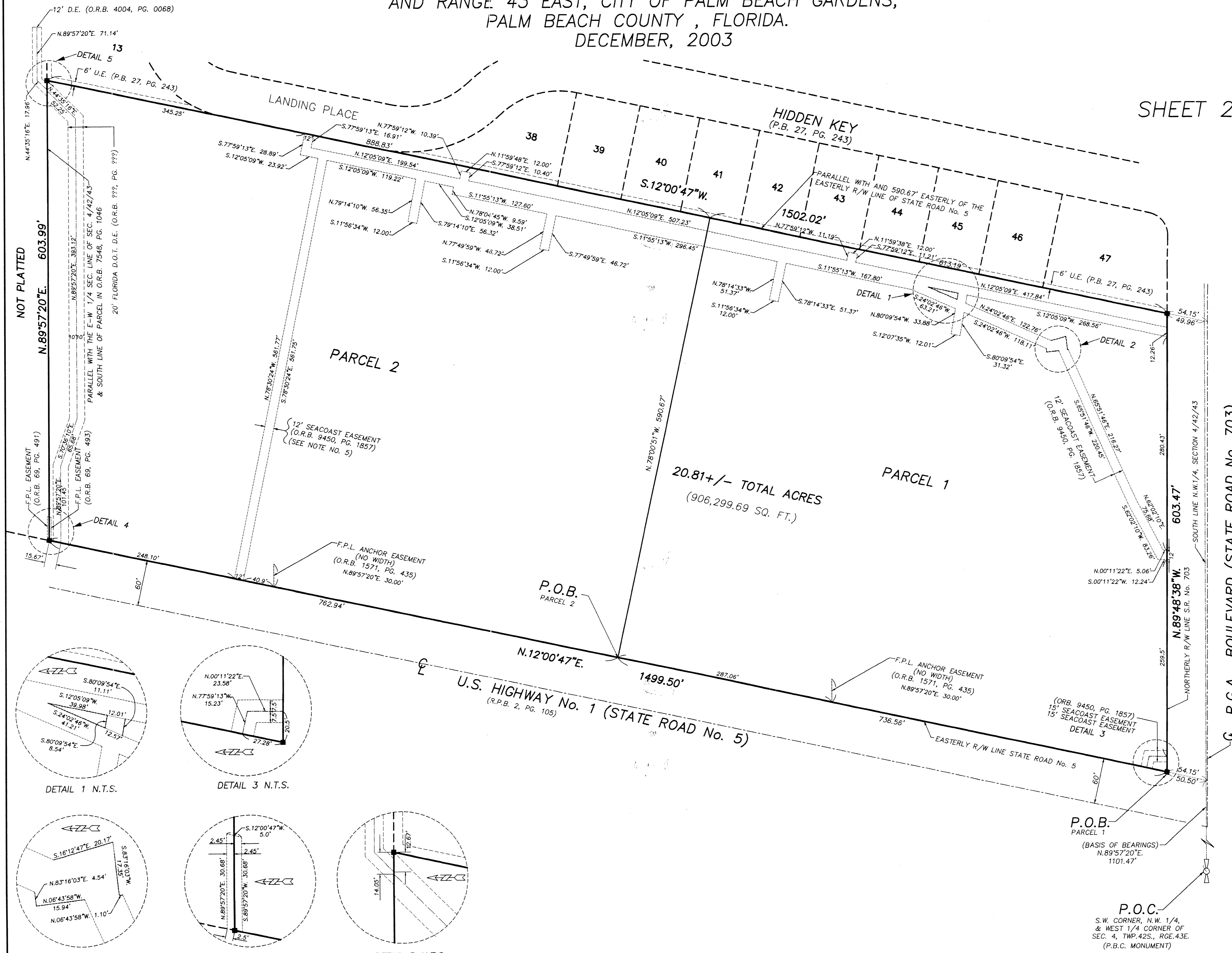
OAKBROOK SQUARE

BEING A PORTION OF SECTION 4, TOWNSHIP 42 SOUTH,
AND RANGE 43 EAST, CITY OF PALM BEACH GARDENS,
PALM BEACH COUNTY, FLORIDA.

DECEMBER, 2003

53

SHEET 2 OF 2



ABBREVIATIONS AND SYMBOLS

- 1. — = Denotes Set Permanent Reference Monument's (P.R.M.'s). Stamped P.R.M. L.S. # 3357.
- 2. C — = Centerline.
- 3. R/W — = Right of Way
- 4. P.B. — = Plat Book.
- 5. P.G.(S) — = Pages.
- 6. SEC. — = Section.
- 7. TWP. — = Township.
- 8. RGE. — = Range.
- 9. U.E. — = Utility Easement.
- 10. D.E. — = Drainage Easement.
- 11. D.B. — = Deed Book
- 12. A — = Arc Length.
- 13. Δ — = Central Angle.
- 14. R — = Radius.
- 15. C.B. — = Chord Bearing.
- 16. O.R.B. — = Official Record Book.
- 17. R.P.B. — = Road Plat Book.
- 18. L.A.E. — = Limited Access Easement.
- 19. P.O.C. — = Point of Commencement.
- 20. P.O.B. — = Point of Beginning.
- 21. P.B.C. — = Palm Beach County.
- 22. F.N.D. — = Found.
- 23. ESM'T — = Easement
- 24. W'y — = Westerly
- 25. F.P.L. — = Florida Power and Light

OAKBROOK SQUARE

WALLACE SURVEYING			
CORP. LICENSED BUSINESS # 4590			
801 NORTHPOINT PARKWAY, SUITE 117, WEST PALM BEACH, FLORIDA 33417 * (561) 840-4551			
FIELD:	JOB NO: 83-225AM	F.B.:	PG.
OFFICE: M.B.	DATE: DEC, 2003	DRG. NO:	83-225-B
CKD:	REF:	SHEET	2 OF 2

P.O.C.
S.W. CORNER, N.W. 1/4,
& WEST 1/4 CORNER OF
SEC. 4, TWP. 42S., RGE. 43E.
(P.B.C. MONUMENT)